

NOTES:

1. GCE = GENERAL COMMON ELEMENT

CLCE = COMMERCIAL LIMITED COMMON ELEMENT

RLCE = RESIDENTIAL LIMITED COMMON ELEMENT

IRLCE = INDIVIDUAL RESIDENTIAL LIMITED COMMON ELEMENT

2. ALL UNIT DIMENSIONS ARE APPROXIMATE AND ARE BASED UPON PRE-CONSTRUCTION DIMENSIONS. ACTUAL UNIT BOUNDARIES MAY VARY DEPENDING ON EXISTING BUILDING CONDITIONS. ACTUAL UNIT BOUNDARIES EXTEND TO INCLUDE SUCH UNMEASURABLE ITEMS SUCH AS DRYWALL, PLASTER, FLOORING, DOORS AND WINDOWS. SEE CONDOMINIUM DECLARATION FOR SPECIFIC DETAILS.

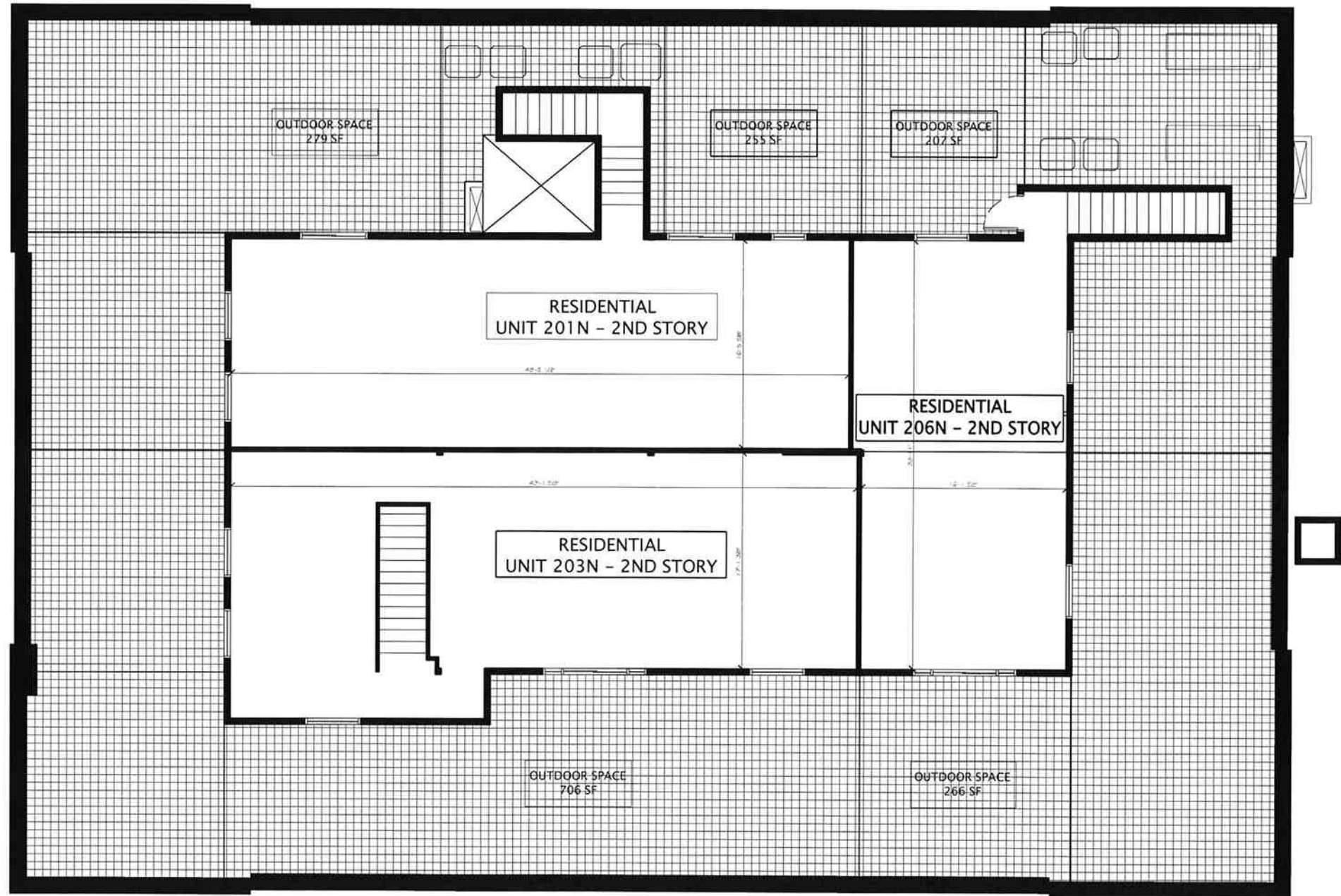
3. ALL PARKING SPACES SHOWN HEREON ARE AS FOLLOWS:

F = FULL SIZE PERPENDICULAR - 9' x 18'

RP = RESIDENTIAL PARKING SPACE

HL = HEIGHT LIMITATION - PARKING SPACE LIMITED TO VEHICLE LESS THAN 6'- 4" HIGH MAX.

4. ALL PARKING SPACES LABELED RP-1 THRU RP-9 ARE RESIDENTIAL LIMITED COMMON ELEMENTS FOR THE EXCLUSIVE USE OF PARTICULAR UNITS IN ACCORDANCE WITH THE DECLARATION.



FOURTH FLOOR PLAN – UNITS 201N, 203N, 206N UPPER LEVEL

WATER'S PLACE NORTH BUILDING

SCALE: 1" = 4' 12' 24'

Dominion
Development
Resources, LLC

172 South Pantops Drive
Charlottesville, VA 22911
434.979.8121 (p)
434.979.1681 (f)
DDRVA.com