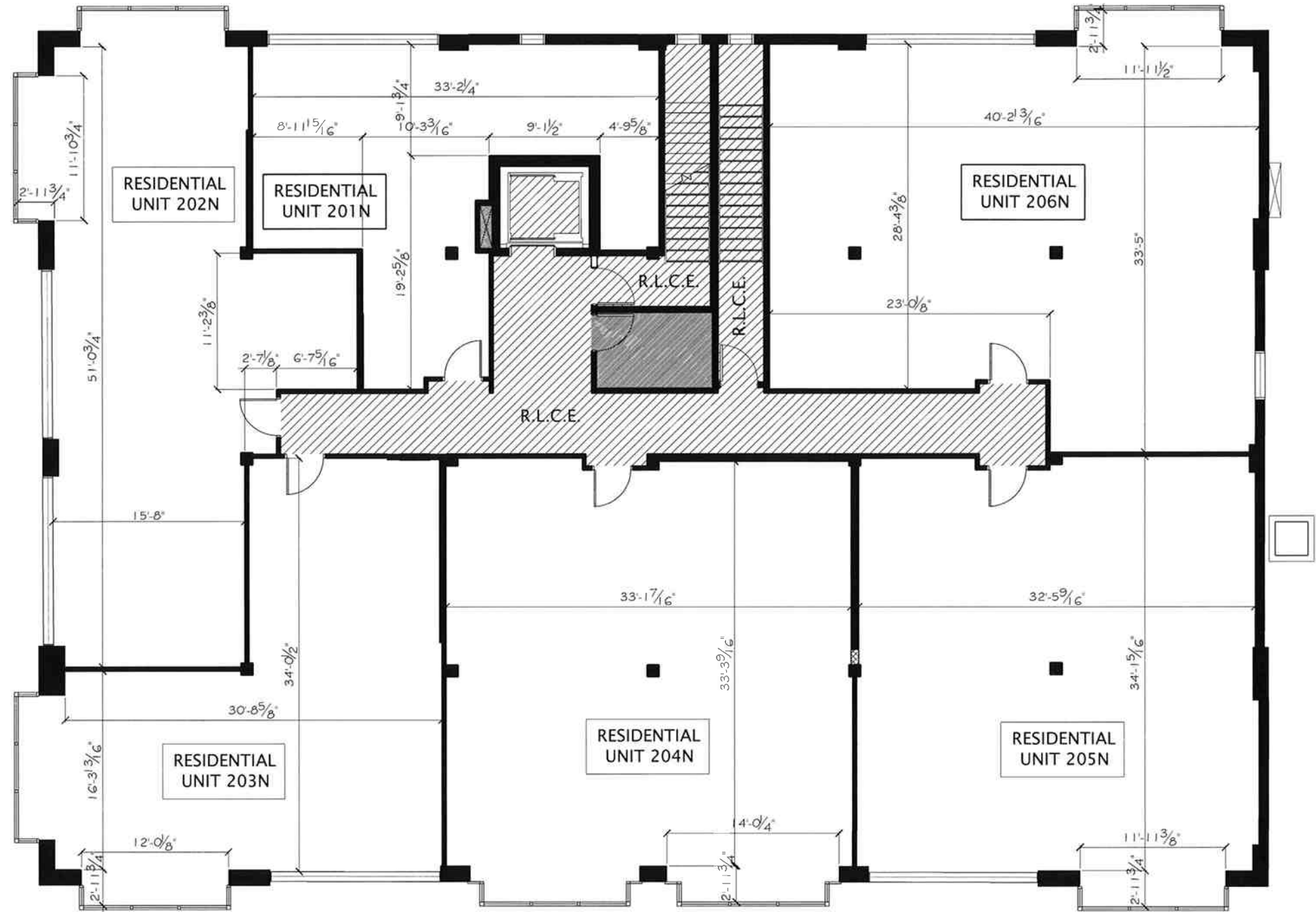


NOTES:

1. GCE = GENERAL COMMON ELEMENT
 CLCE = COMMERCIAL LIMITED COMMON ELEMENT
 RLCE = RESIDENTIAL LIMITED COMMON ELEMENT
 IRLCE = INDIVIDUAL RESIDENTIAL LIMITED COMMON ELEMENT
2. ALL UNIT DIMENSIONS ARE APPROXIMATE AND ARE BASED UPON PRE-CONSTRUCTION DIMENSIONS. ACTUAL UNIT BOUNDARIES MAY VARY DEPENDING ON EXISTING BUILDING CONDITIONS. ACTUAL UNIT BOUNDARIES EXTEND TO INCLUDE SUCH UNMEASURABLE ITEMS SUCH AS DRYWALL, PLASTER, FLOORING, DOORS AND WINDOWS. SEE CONDOMINIUM DECLARATION FOR SPECIFIC DETAILS.
3. ALL PARKING SPACES SHOWN HEREON ARE AS FOLLOWS:
 F = FULL SIZE PERPENDICULAR - 9' x 18'
 RP = RESIDENTIAL PARKING SPACE
 HL = HEIGHT LIMITATION - PARKING SPACE LIMITED TO VEHICLE LESS THAN 6'- 4" HIGH MAX.
4. ALL PARKING SPACES LABELED RP-1 THRU RP-9 ARE RESIDENTIAL LIMITED COMMON ELEMENTS FOR THE EXCLUSIVE USE OF PARTICULAR UNITS IN ACCORDANCE WITH THE DECLARATION.

UNIT	FLOOR AREA
201N	1,456 SF
202N	985 SF
203N	1,776 SF
204N	1,177 SF
205N	1,140 SF
206N	1,862 SF



Dominion
Development
Resources, LLC

172 South Pantops Drive
 Charlottesville, VA 22911
 434.979.8121 (p)
 434.979.1681 (f)
 DDRVA.com

engineers
 surveyors
 planners
 architects

THIRD FLOOR PLAN - UNITS 201N - 206N
WATER'S PLACE NORTH BUILDING

