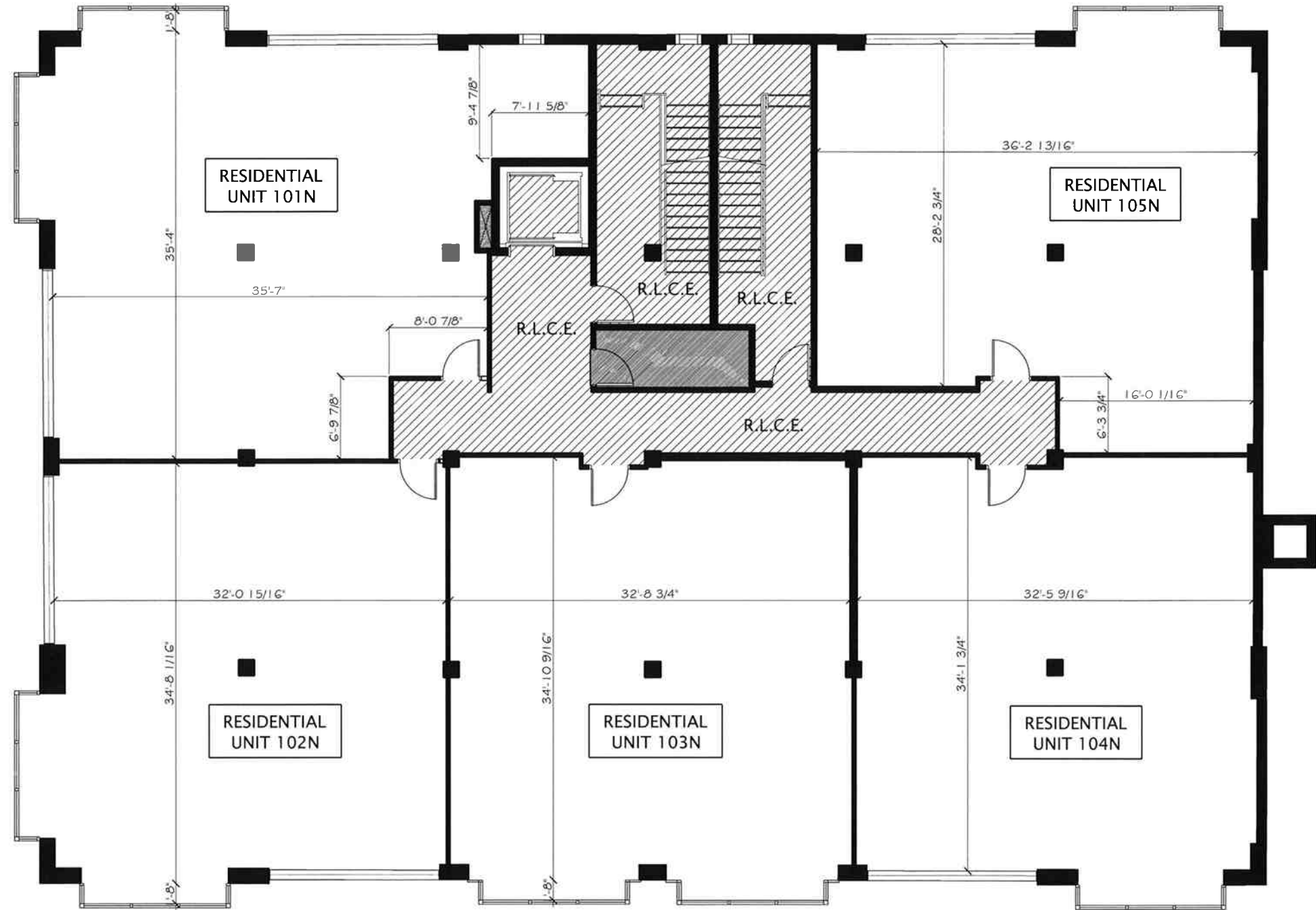


NOTES:

- GCE = GENERAL COMMON ELEMENT
 CLCE = COMMERCIAL LIMITED COMMON ELEMENT
 RLCE = RESIDENTIAL LIMITED COMMON ELEMENT
 IRLCE = INDIVIDUAL RESIDENTIAL LIMITED COMMON ELEMENT
- ALL UNIT DIMENSIONS ARE APPROXIMATE AND ARE BASED UPON PRE-CONSTRUCTION DIMENSIONS. ACTUAL UNIT BOUNDARIES MAY VARY DEPENDING ON EXISTING BUILDING CONDITIONS. ACTUAL UNIT BOUNDARIES EXTEND TO INCLUDE SUCH UNMEASURABLE ITEMS SUCH AS DRYWALL, PLASTER, FLOORING, DOORS AND WINDOWS. SEE CONDOMINIUM DECLARATION FOR SPECIFIC DETAILS.
- ALL PARKING SPACES SHOWN HEREON ARE AS FOLLOWS:
 F = FULL SIZE PERPENDICULAR - 9' x 18'
 RP = RESIDENTIAL PARKING SPACE
 HL = HEIGHT LIMITATION - PARKING SPACE LIMITED TO VEHICLE LESS THAN 6'-4" HIGH MAX.
- ALL PARKING SPACES LABELED RP-1 THRU RP-9 ARE RESIDENTIAL LIMITED COMMON ELEMENTS FOR THE EXCLUSIVE USE OF PARTICULAR UNITS IN ACCORDANCE WITH THE DECLARATION.



UNIT	FLOOR AREA
101N	1,295 SF
102N	1,137 SF
103N	1,164 SF
104N	1,137 SF
105N	1,128 SF

Dominion Development Resources, LLC
 engineers surveyors
 planners architects
 172 South Pantops Drive
 Charlottesville, VA 22911
 434.979.8121 (p)
 434.979.1681 (f)
 DDRVA.com



SECOND FLOOR PLAN – UNITS 101N – 105N
 WATER'S PLACE NORTH BUILDING

